

Instructions for Downloading Sensor Dashboard Data

This guide provides step-by-step instructions for accessing and downloading sensor data through the Grafana visualization platform hosted at the University of Rostock.

Step 1

Access to the platform requires an active VPN connection. After establishing the VPN connection, open the Grafana webpage:

<https://sensors.wetscapes.uni-rostock.de:53000/>

Troubleshooting VPN Access

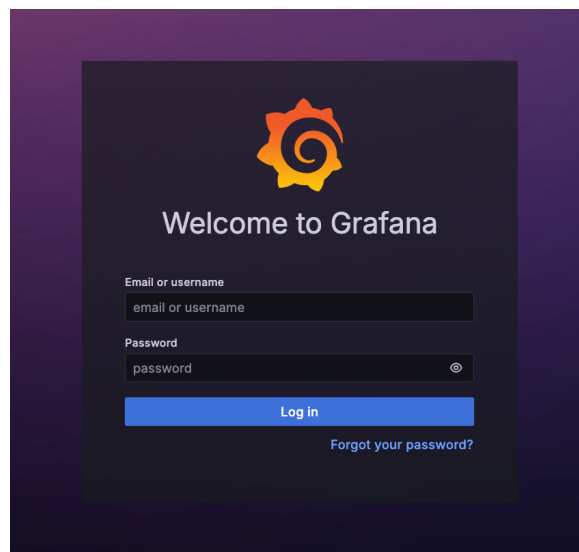
If the InfluxDB webpage cannot be reached, please check the following:

- Verify that the university VPN connection is active.
- Try disconnecting and reconnecting the VPN.
- Confirm that you are using the correct VPN profile provided by the University of Rostock or the University of Greifswald or the VPN profile at your local university.
- Test the connection by opening another university-internal webpage.
- If the webpage still does not load, try refreshing the browser or clearing the browser cache.
- Some institutional networks or firewalls may block VPN connections. In such cases, try connecting from a different network.

If the problem persists, please contact the Data Steward.

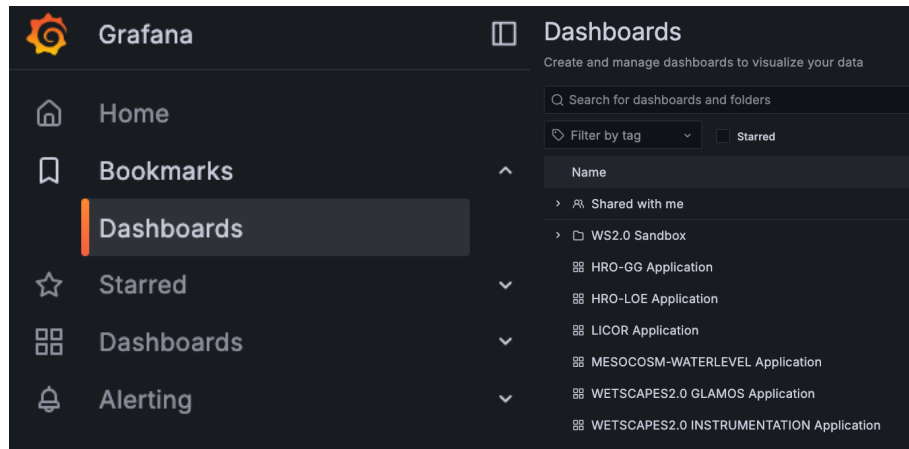
Step 2

Log in using your credentials. These should have been provided by the RDM team. If you do not have access credentials, please contact the Data Steward.



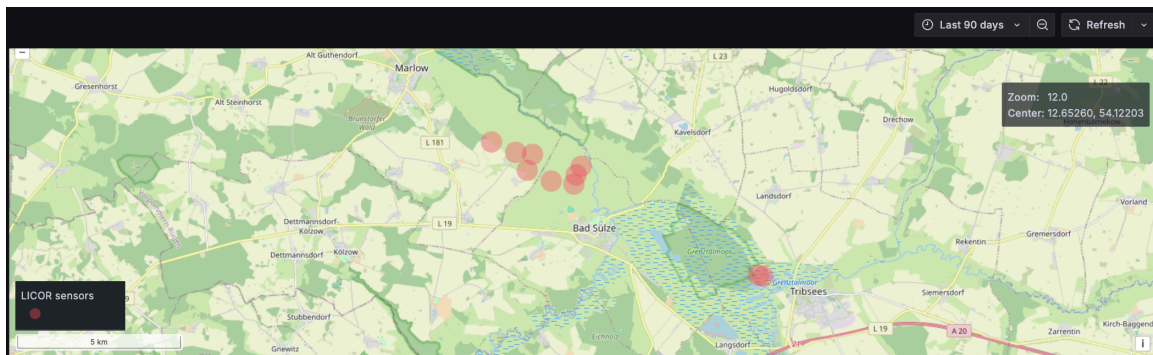
Step 3

Click **Dashboards** in the left-side navigation menu to browse the available dashboards and select the dashboard you want to access.



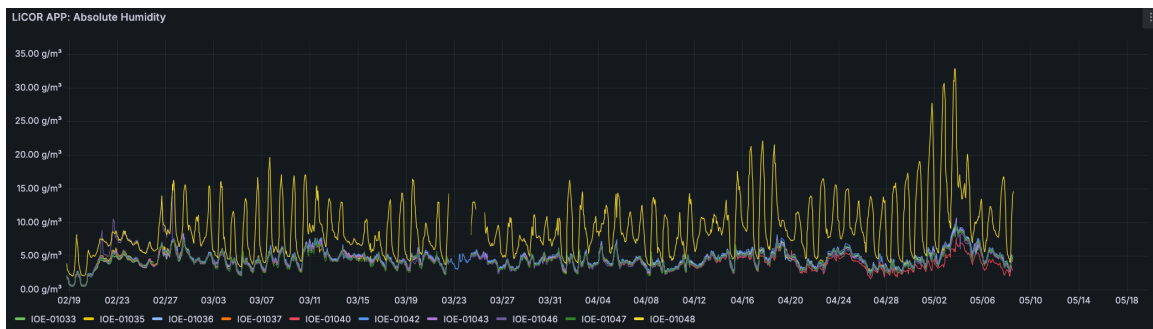
Step 4

For your selected dashboard, adjust the time range using the time selector in the upper-right corner and click the **Refresh** button.




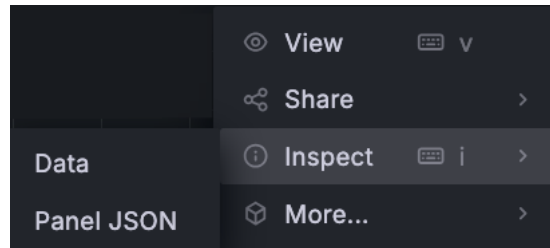
Step 5

A *panel* is an individual graph or visualization within a Grafana dashboard. **Locate** the panel containing the sensor data you wish to export.



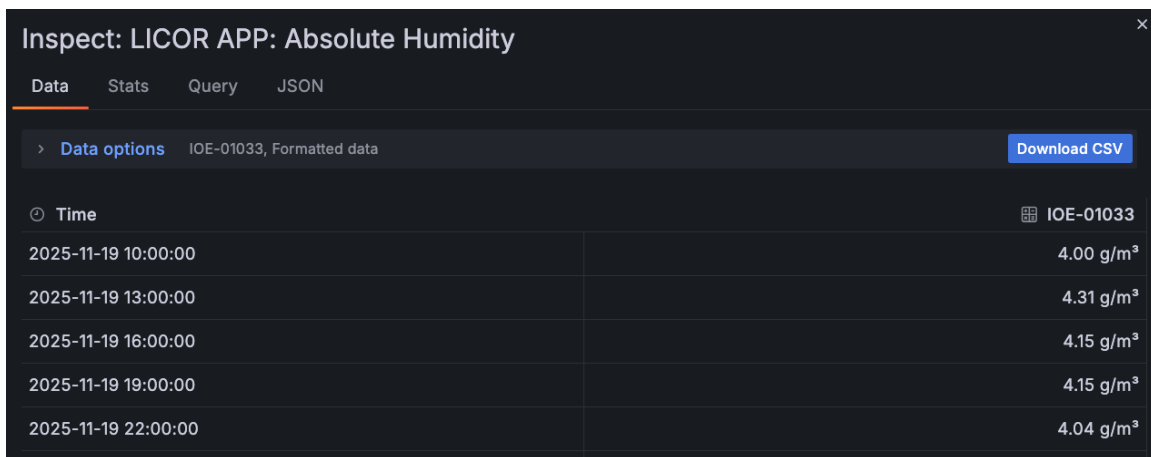
Step 6

Open the panel menu by clicking the three-dot menu . Select **Inspect** → **Data** to open the data inspection interface.



Step 7

Press the **Download CSV** button to export the displayed data as a CSV file. Exported timestamps are provided either in Central European local time (CET/CEST) or in the local browser time zone, depending on the Grafana user settings.

A screenshot of the Grafana 'Inspect' interface for a panel titled 'LICOR APP: Absolute Humidity'. The interface shows a table of data points with columns for 'Time' and 'Value'. A 'Download CSV' button is visible in the top right corner. The data points are as follows:

Time	Value
2025-11-19 10:00:00	4.00 g/m ³
2025-11-19 13:00:00	4.31 g/m ³
2025-11-19 16:00:00	4.15 g/m ³
2025-11-19 19:00:00	4.15 g/m ³
2025-11-19 22:00:00	4.04 g/m ³

Contact

Data Steward: martin.aleksandrov@uni-rostock.de